

# Waiheke Local Board

## Community Forum

**What:** Community Forum

**Where:** Waiheke Local Board offices, 10 Belgium Street, Ostend; MS Teams

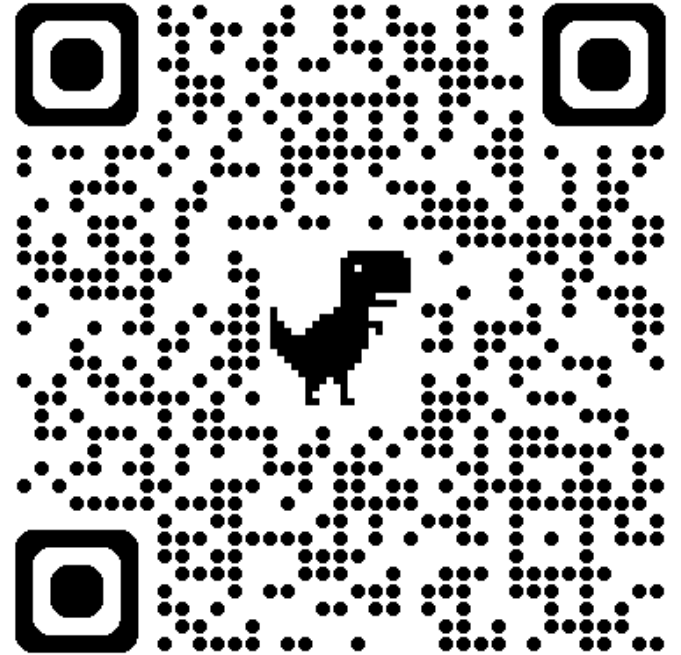
**When:** 11 June 2025 5:30pm – 7:00pm

**Members:**  
 Cath Handley (Chair)  
 Bianca Ranson (Deputy Chair)  
 Kylee Matthews  
 Robin Tucker  
 Paul Walden

Time	Topic	Speaker(s)	Proposed outcome(s)
5:30pm	Karakia and introductions.	Deputy Chair K Matthews	Formally open the meeting.
5:35pm	Beatty Reserve Ecological Restoration	Ken Patterson <i>Beatty Reserve Ecological Restoration</i>	Members will be provided with an overview of this new community group, and their plans for waste removal, weed management, planting, and pest control at Beatty Reserve.
5:55pm	Unleashed dogs and the protection of seabirds at Anzac Bay	Janet November <i>Anzac Bay resident</i>	Members will be informed about residents' concerns over the danger posed to seabirds by unleashed dogs at Anzac Bay.
6:35	Closing karakia.	Deputy Chair K Matthews	Formally close the meeting

# Beatty Reserve Ecological Restoration



Discussion for the formation of community group  
For weed management at  
28B Beatty Parade  
Meeting on 27/05/2025



Scan to register as a Volunteer



## Registration to Beatty Reserve Restoration

B I U  

Contact us at +64220391427 or [beattyreserve@gmail.com](mailto:beattyreserve@gmail.com)

Name \*

Short answer text

Email \*

Short answer text

Phone Number \*

Short answer text

Days per year you may be able to attend? \*

☐ Day 1

☐ Day 2

☐ Day 3

☐ Other...

Please use your phone  
to scan the QR code

If you can't attend to  
any volunteer days just  
tick other

You will receive a confirmation email from  
[beattyreserve@gmail.com](mailto:beattyreserve@gmail.com)  
Any feedback, comments or suggestions  
can be sent to that address

# What Can We Do?

Our contributions with collaboration through volunteer days, ideas for tasks to undertake, & the shared focus on the common goals for improving Betty Reserve can make a difference.



## Introduction: Beatty Reserve's Significance

- **Location:** Situated on Waiheke Island, within the Hauraki Gulf, New Zealand.
- **Ecological Importance:** An important native ecosystem, contributing to Waiheke Island's rich biodiversity.
- **Council Recognition:** Acknowledged by Auckland Council as a Drainage reserve leading into Raupo - a threatened ecosystems in Aotearoa in need of protection and restoration.

## The Challenges: Multiple Threats to Native Ecosystems

- **Invasive Weed Species:** Non-native plants outcompete indigenous flora for resources, leading to native plant decline and habitat reduction. Auckland Council's weed management policy highlights these effects.
- **Legacy Waste Disposal:** The presence of **legacy waste disposed on site** poses an environmental burden and threat to the integrity of the reserve and the wetlands that it feeds.
- **Predatory Pests:** Invasive predators, notably **rats**, pose a threat to native bird and gecko populations, disrupting the delicate ecological balance.

## Management & Policy Framework

- **Auckland Council's Role:** Dedicated to protecting and enhancing Waiheke's natural features and biodiversity.
- **Key Documents:**
  - Auckland Council's Weed Management Policy
  - Regional Pest Management Plan (RPMP)
- **Volunteer Input:** Community engagement and volunteer efforts are crucial for hands-on conservation and support in addressing the reserve's challenges.

# The Goal: Holistic Preservation

- **Objective:** To safeguard Beatty Reserve's native ecosystem through comprehensive management.
- **Strategy:** Implementing informed and effective strategies that address:
  - Weed control
  - Pest animal management (e.g., rat eradication)
  - Mitigation of impacts from historical waste.
- **Overall Vision:** Contributing to the distinctive character and biological diversity of Waiheke Island for future generations.



# Notes for points to discuss at local board meeting

## Historic Waste Removal

- **Removal plan for historic waste:** We would like to make this our first volunteer day.
- **Collaboration with the Local Board:** Will the Local Board supply waste bins for this effort?

## Weed Management & Planting

- **Volunteer days:** When can we start weed management? Is the Local Board agreeable to this? If so, I will elaborate with the group to make a calendar for volunteer days and diffuse the message via contact list and community notification.
- **Collaborative planting:** We're looking to plant before controlling the significant privet infestation. This is for ecological reasons, as well as for screening industrial areas from noise/views and for erosion control. Love Our Wetlands has expressed interest in participating. Will the Local Board fund some trees this year and for the next three years?

## Ecological Report & Pest Control

- **Ecological report and planting plan:** What is the Local Board's involvement with this?
- **Assigning this task.** Can we get a professional to do this?
- **Pest control:** Discussion on managing rats and mice.

## Wetland Status & Funding


- **Wetland status:** What is the current status of the wetland and how does the drainage reserve affect it?
- **Funding:** What is the current funding allocated for the wetland? What are the future budget allocations, and have they been included in the next three-year plan?



The following table summarizes the RPMP classification and key management guidelines for the specified weed species found in Beatty Reserve

Weed Species	RPMP Classification	Key Management Guidelines/Rules	Relevant Snippet(s) 
Moth plant ( <i>Araujia hortorum</i> )	Waiheke: Destroy	All occupiers of land on Waiheke Island must destroy all <u>moth plant</u> on that land.	13
Tobacco weed ( <i>Solanum mauritianum</i> )	Whole region: Sustained control, Aotea: Eradication	Restrictions on breeding, distribution, release, sale, and planting. Destruction required if directed. Buffer zone rules may apply.	14

Privet ( <i>Ligustrum lucidum</i> )	Whole region: Sustained control, Aotea: Eradication	Restrictions on breeding, distribution, release, sale, and planting. Destruction required if directed.	15
Privet ( <i>Ligustrum sinense</i> )	Whole region: Sustained control, Hauraki Gulf Controlled Area Notice pest	Restrictions on breeding, distribution, release, sale, and planting. Destruction required if directed.	16
Japanese honeysuckle ( <i>Lonicera japonica</i> )	Whole region: Sustained control, National Pest Plant Accord Species	Restrictions on breeding, distribution, release, sale, and planting. Destruction required if directed.	17



<p>Tradescantia fluminensis (<u>Wondering Jew</u>)</p>	<p>Whole region: Sustained control, National Pest Plant Accord Species</p>	<p>Restrictions on breeding, distribution, release, sale, and planting. Destruction required if directed. Biocontrol methods are being explored.</p>	<p>18</p>
<p>Pampas grass (<i>Cortaderia</i> sp.)</p>	<p>Whole region: Sustained control, National Pest Plant Accord Species</p>	<p>Restrictions on breeding, distribution, release, sale, and planting. Destruction required if directed. Priority pest in certain areas.</p>	<p>20</p>



## Relevance of Policies and Plans to Weed Management in Beatty Reserve

The Auckland Council's Weed Management Policy and Regional Pest Management Plan (RPMP) together provide a comprehensive framework for addressing the challenges posed by invasive weeds in Beatty Reserve. The Weed Management Policy establishes the overarching principles and outlines a range of methods for controlling unwanted plants on council -administered land.<sup>6</sup> In contrast, the RPMP specifically identifies pest plants, including the suite of invasive weeds found in Beatty Reserve, and mandates their management based on their ecological impact and potential for spread.<sup>9</sup> The policy guides the *how* of weed management by providing a toolkit of control methods, while the RPMP specifies the *what* and *to what extent* for each targeted weed species within the reserve.

The objectives and guidelines of both the Weed Management Policy and the RPMP offer valuable direction for developing practical weed control strategies within Beatty Reserve. The Weed Management Policy's emphasis on an integrated approach and the use of best practices<sup>6</sup> suggests that a combination of control methods, tailored to the specific characteristics of each weed species, would likely be the most effective strategy in the reserve. The RPMP's classification of each weed species (e.g., sustained control) provides critical information about the long-term commitment required for their management, including the necessity for ongoing monitoring and follow-up treatments to prevent re-infestation. Notably, the RPMP's specific rule mandating the destruction of moth plant on Waiheke Island<sup>13</sup>



Mahere Whakatauirā Mana Whakahaere Papa  
Rēhia ā-Rohe o Waiheke

# **Waiheke Local Parks Management Plan 2023**

Volume 2

Including Appendices

[aucklandcouncil.govt.nz](http://aucklandcouncil.govt.nz)





# Drainage reserves not within scope of the management plan...

When can this happen?

Review the land status of utility and drainage reserves  
at the time of a future plan variation.

Parks out of scope of the local parks management plan

## Appendix H: Council owned or managed

Reserve name	Physical address	Legal description
Beatty Reserve	28B Beatty Parade	Lot 11 DP 358415
Blackpool Park	23-35 Nikau Road	Lots 216, 372, 437, 438, 439, 441 & 446 DP 25861; Lot 443 DP 22849; Lot 436 DP 33180
Hill Road Crescent Road East	77 Crescent Road East	Lot 229 DP 15795; Lot 4 DP 168995; Lot 4 DP 402996
Karaka Reserve	Te Aroha Avenue	Lot 2 DP 54946
Makora Reserve Accessway	37B Makora Avenue	Lot 2 DP 55602
Piritaha Esplanade Reserve	88G Church Bay Road	Lot 7 DP 193750
Rangihoua Reserve & Onetangi Sports Park	133-165 O'Brien Road	Lot 7 DP 167747; Part Lot 15 DP 11657; Lot 2 DP 94533; Lot 6 DP 204906
Rangihoua Maunga and surrounding Landscape Amenity Area	133-165 Onetangi Road	Lot 7 DP 167747; Part Lot 15 DP 11657
Tawaipareira Reserve	104 Ostend Road	Part Lot 125 DP 14355; Lot 2 DP 207850; Lot 4 DP 207850
Upland Road Walkway	46 Omiha Road	Lot 489 DP 20610; Part Whakanewha Block
Wairua Road Reserve	4 Wairua Road	Lot 490 DP 19224
Whakanewha Regional Park	75 Gordons Road	Lot 2 DP 167747; Lot 1 DP 321424
Wharoa Basin	19 Moa Avenue	Lot 414 DP 22849

\*Review the land status of utility and drainage reserves at the time of a future plan variation

Note Kiwi Moa Accessway (Lot 3 DP 54943) and Logan's Track (Lot 4 DP 54944) are not within the scope of the management plan as the road is under the control and management of Auckland Transport and are not Council owned or managed

\* Council will continue to administer this reserve

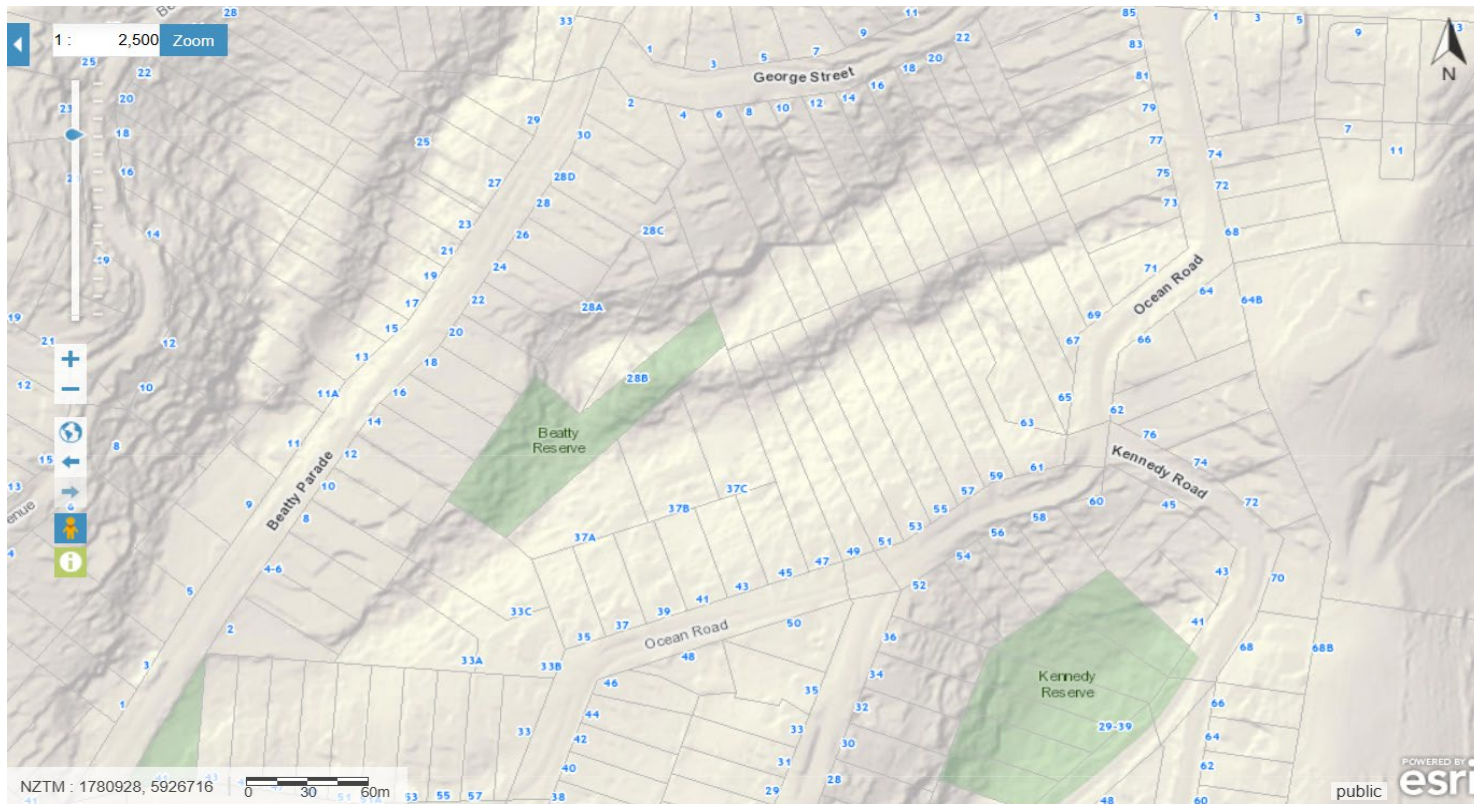
# Historical access to the reserve Via shared driveway

28b Beatty Parade access

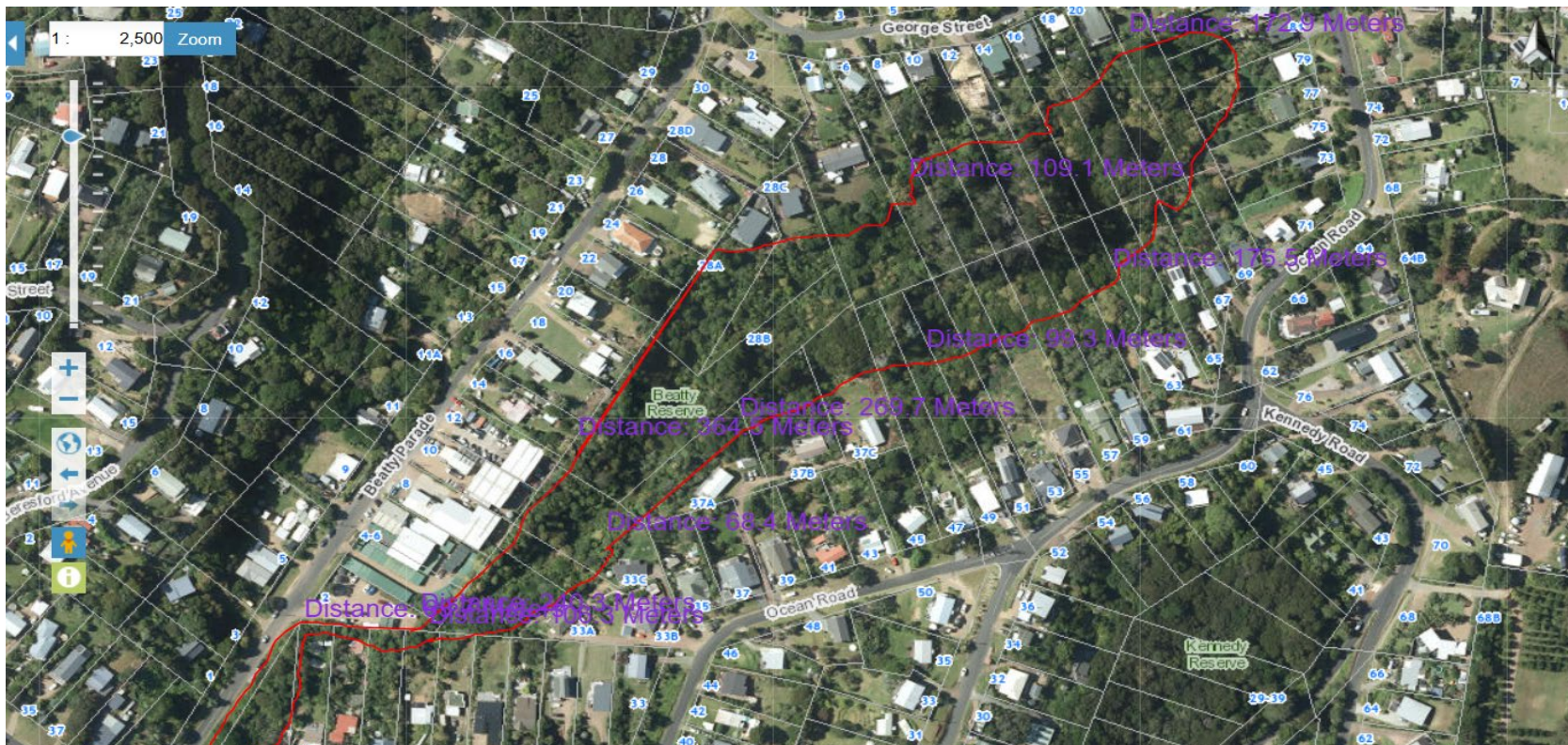




# Map for context & actual position



# Map for proposed holistic restoration





# Notes of points covered

## Historic Waste Removal

- **Removal plan for historic waste:** We would like to make this our first volunteer day.
- **Collaboration with the Local Board:** Will the Local Board supply waste bins for this effort?

## Weed Management & Planting

- **Volunteer days:** When can we start weed management? Is the Local Board agreeable to this? If so, I will elaborate with the group to make a calendar for volunteer days and diffuse the message via contact list and community notification.
- **Collaborative planting:** We're looking to plant before controlling the significant privet infestation. This is for ecological reasons, as well as for screening industrial areas from noise/views and for erosion control. Love Our Wetlands has expressed interest in participating. Will the Local Board fund some trees this year and for the next three years?

## Ecological Report & Pest Control

- **Ecological report and planting plan:** What is the Local Board's involvement with this?
- **Assigning this task.** Can we get a professional to do this?
- **Pest control:** Discussion on managing rats and mice.

## Wetland Status & Funding

- **Wetland status:** What is the current status of the wetland and how does the drainage reserve affect it?
- **Funding:** What is the current funding allocated for the wetland? What are the future budget allocations, and have they been included in the next three-year plan?